



All Things Thurlby

Newsletter 13
06.12.2024

Dear Parents

Congratulations

Thurlby Stars Certificate Winners

We would like to congratulate our Thurlby Stars for demonstrating one of our Thurlby Values this week. Our winners are:

- Reception** - Tommy and Alby
- Year 1** - Kade and Mira
- Year 2** - Freya and Hughie
- Year 3** - Edith and Douglas
- Year 4** - Max and Clara
- Year 5** - Mia and Olivia
- Year 6** - Arabella and Archie

Attendance

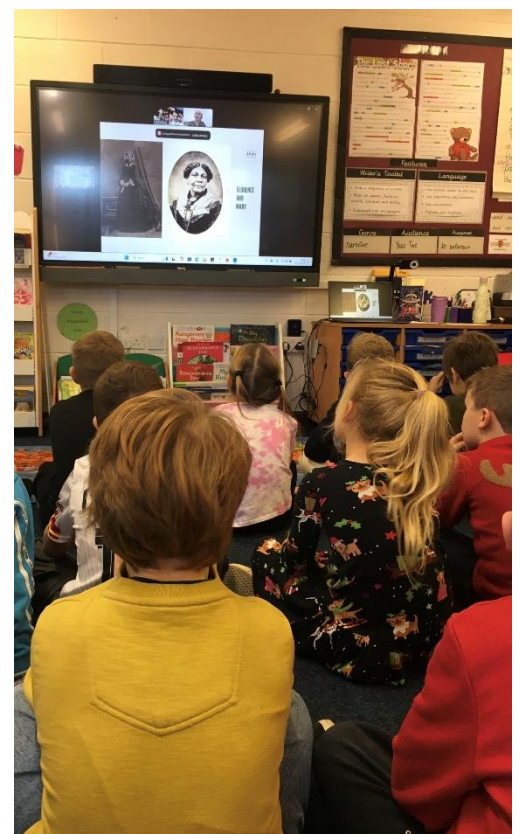
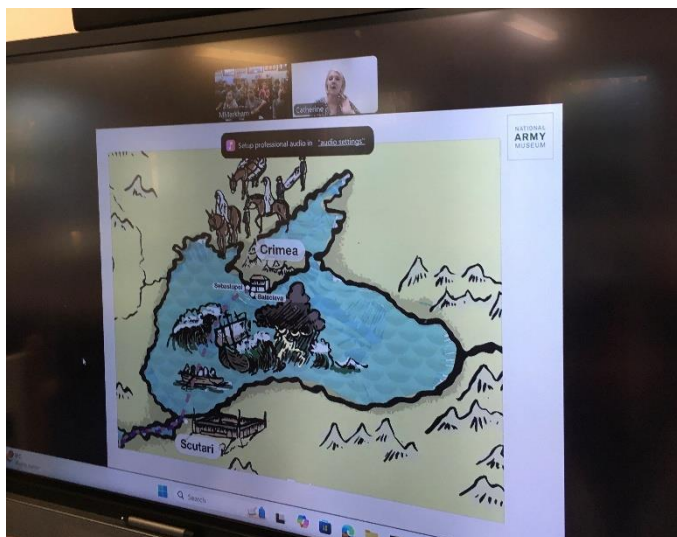
Our average attendance figure, for the week beginning 2nd December, was 91.8%.

Class Attendance Awards

1st	Year 2	98.2%
2nd	Year 4	93.7%
3rd	Reception	92.8%

Year 2

Year 2 had an exciting virtual History lesson, delivered by the National Army Museum, all about Florence Nightingale and Mary Seacole last Friday. The children enjoyed looking at and finding out about both ladies and why they were significant in history. We got to see some artefacts that were used such as a pouring cup, bed warmer and a pestle and mortar that Mary Seacole would have used to grind herbs to make medicine.



Forest School - Year 5

This week, Year 5 had to design and build a landing capsule to protect their 'egg-stronaut' when landing back on Earth. They all started with a paper cup and a bag for a parachute and worked together in small groups to come up with a design. Each group worked well together and they all came up with different ideas of how best to protect their 'egg-stronaut'.

Once built, they were put to the test: test 1 was a simple drop from about 2 metres high; for test 2 they were thrown into the air. All capsules protected the 'egg-stronaut' for test 1, with only one suffering minor cracking. Test 2 was more challenging and unfortunately a couple of 'egg-stronauts' did not survive the fall back to Earth. Well done Year 5 for designing your capsules and showing great teamwork.



Feeling Festive

Our Christmas Tree arrived this week, kindly donated by **Bah Humbug Christmas Trees**. The children enjoyed adding their baubles on Wednesday, in readiness for our Christmas Tree Appeal which starts next week. Please see a reminder of the information regarding this charity appeal below:

In support of The Rotary Club's Christmas Tree Appeal, we are inviting families to purchase a gift suitable for a child (baby to teenager, boy or girl) - £5- £10 suggested value. **Please wrap the gift and attach a label and write who the gift is best suited to, for example, boy age 10.**

Please send the gift in to school from **Monday 9th December** and by **Friday 13th December**, at the latest please, for placing under our tree ready for collection and distribution by The Rotary Club of Stamford St. Martins. Participation is, of course, voluntary.

Many thanks



PE and Forest School - Term 3

As per our Parentmail, sent on Monday, please see a reminder of the PE kit days and Forest School for Term 3.

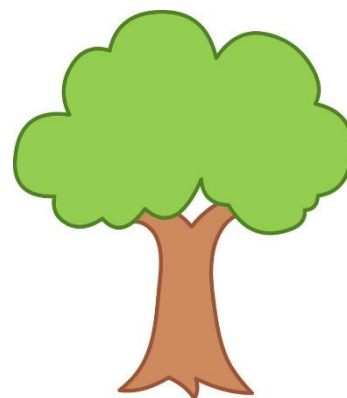
PE kit days

Reception -	Monday and Thursday
Y1 -	Tuesday and Friday
Y2 -	Tuesday and Wednesday
Y3 -	Wednesday and Thursday
Y4 -	Monday*
Y5 -	Monday and Friday
Y6 -	Tuesday and Friday

Forest School

* Please note that Y4 will be having Forest School in term 3 on Thursdays, starting on Thursday 9th January, so will need appropriate kit as they will go out in all weathers.

- Waterproof coat
- T-shirt
- Jumper
- Jogging bottoms/old jeans/waterproof trousers
- Wellington boots (in a separate named carrier bag)



School Trip Payments

Year 6 - Bomber Command Centre - Friday 13th December

£22.10 required by Monday 9th December please.

Year 3 - Flag Fen, Peterborough - Tuesday 10th December

£18.70 required by today please.

THANK
YOU!

When you are ready to make your payments, please click on the Payment Section, followed by 'Go to Shop', 'Place Item in the Basket' and 'Pay'.

Mrs K Finch
Headteacher

Upcoming Calendar Dates

Friday 6 th December -	Payment Deadline for Year 3 trip (£18.70)
Monday 9 th December -	Christmas Tree Appeal starts today
	Payment Deadline for Year 6 trip (£22.10)
Tuesday 10 th December -	Year 3 trip to Flag Fen
Wednesday 11 th December -	EYFS/KS1 Nativity - Lawrance Park Hall @ 9.30am (Reception and Year 1 parents with surnames A-H)
	EYFS/KS1 Nativity - Lawrance Park Hall @ 9.30am (Year 1 parents with surnames J-W and Year 2 parents)
	Christmas Jumper Day (Please note date change)
Friday 13 th December -	Year 6 trip to Bomber Command Centre, Lincoln
	Christmas Tree presents under tree by today please
Saturday 14 th December -	PTFA Christmas Fayre 12-2.00pm
Monday 16 th December -	Year 5/6 Christmas Performance - Thurlby Methodist - 1.30pm
	Year 3/4 Christmas Performance - School Hall - Time 2.30pm
	PTFA Christmas Bauble Competition Deadline today
Tuesday 17 th December -	Deadline to order hot meals for start of next term
	EYFS/KS1 Phonics/Teaching your child to read. School hall @ 2.15pm
Thursday 19 th December -	Year 6 VE Day
	Rocksteady Concert for participating children @ 2.15pm
Friday 20 th December -	End of Term 2
Monday 6 th January -	Training Day
Tuesday 7 th January -	Start of Term 3
	Shakespeare for Schools Club starts today from 3.30-4.45pm
Thursday 9 th January -	Forest School starts today for Year 4
Monday 27 th January -	Year 5 Bikeability starts today until Thursday
	Roots to Food in school for Years 2, 3 4 and 6
Thursday 30 th January -	Year 1 Class Assembly @ 9.45am
Friday 14 th February -	PTFA Valentine's Dress Down Day (details to follow)
	Shakespeare Workshop at Thurlby @ 1.30-4.15pm
	End of Term 3

Please see the first link below for Bourne Children's Centre website followed by the link to their FB page which is full of useful information and pictures from their sessions which are so well attended, **free and fun!!!**

[Bourne Children's Centre - Find a children's centre - Lincolnshire County Council](#)

[South Kesteven Children's Centres - South | Facebook](#)

Bourne Children's Centre						
AM/ PM	Monday	Tuesday	Wednesday	Thursday	Friday	Saturday
AM	Festive Pop in and Play 0 to 5 years to include siblings up to 8 years 9.30am-11am	Holiday Fun – Winter Wonderland 0 to 5 years to include siblings up to 8 years 10am-11.30am Tuesday 24 th December only			Festive Pop in and Play 0-5 years to include siblings up to 8 years 9.30am-11am	
PM			Centre Closed 25th December and 1st January	Early Voices Under 1s 1pm-1.45pm Thursday 2 nd January only		

Please scan the QR code to get the most up to date timetable information and to find out more about your local children's centre

