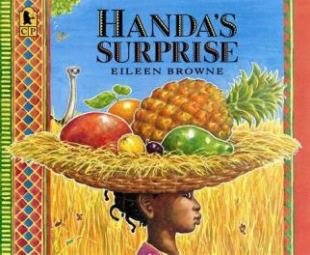

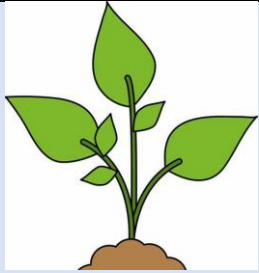


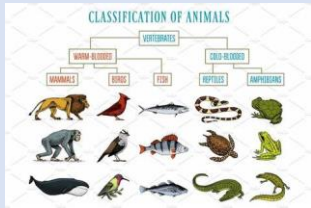
<p style="text-align: center;">Year 1 Miss Baldwin</p>	<h2 style="margin: 0;">Summer Term 2024</h2>		
	<p style="margin: 0;"><i>Summer 1: The World at Our Feet.</i></p> <p style="margin: 0; color: green;"><i>Summer 2: All at Sea!</i></p>		
<p><u>ENGLISH</u></p> 	<ul style="list-style-type: none"> • Reading: whole class, group and individual • Phonics: Read Write Inc. • Writing: fiction and non-fiction (letters, lists, fact file, story writing, invitations, news, non-chronological reports) • Letter formation/handwriting • Stories from Africa: Handa's surprise, Amazing Grace and The Water Princess. • The Tiny Seed linked to science learning. • The 'Lighthouse Keeper' stories. • The 'Snail and The Whale' story. • The faraway tree stories. 	<p><u>MATHS</u></p> 	<ul style="list-style-type: none"> • Number: Multiplication and Division: solve one-step problems involving multiplication and division, by calculating the answer using concrete objects, pictorial representations, and arrays (with support) • Number: Fractions: recognise, find, and name half and a quarter of an object, shape, or quantity • Geometry: Position and Direction: describe position, direction, and movement, involving whole, half, quarter and three-quarter turns Time (ongoing learning throughout the year). • Number: Place Value (within 100): count to and across 100, read and write numbers to 100 in numerals, identify and represent numbers using objects and pictorial representations. • Measurement: Money: recognise and know the value of different denominations of coins and notes. • Measurement: Time: recognise and know the days of the week and be able to tell the time to the hour and to the half hour. (ongoing learning throughout the year)
<p><u>SCIENCE</u></p>	<p>Plants</p> <ul style="list-style-type: none"> • identify and name a variety of common wild and garden plants, including deciduous and evergreen trees 	<p><u>HISTORY</u></p>	<p>The RNLI, lifeboats, and lighthouses</p> <ul style="list-style-type: none"> • What is the RNLI? • Where are our nearest lifeboat stations?



- identify and describe the basic structure of a variety of common flowering plants, including trees.

Animals

- Identify and name a variety of common animals including fish, amphibians, reptiles, birds, and mammals
- describe and compare the structure of a variety of common animals (fish, amphibians, reptiles, birds, and mammals, including pets)
- identify and name a variety of common animals that are carnivores, herbivores, and omnivores



- Seasonal Changes** (ongoing throughout the year)
- observe changes across the four seasons
 - observe and describe weather associated with the seasons and how day length varies



- What is the purpose of a lighthouse?
- How have lifeboats and lighthouses changed over time?

Seaside holidays

- How have seaside holidays changed over time? (Travel, entertainment, accommodation, clothing, food)

The Life of Grace Darling

- Who was Grace Darling?
- The events of 7th September 1838
- Why is she remembered today

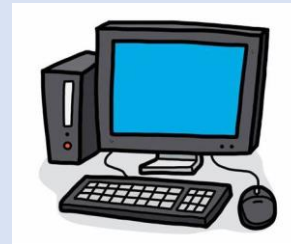
GEOGRAPHY



Africa/Kenya

- To know where Africa is on a world map and where the UK is in relation. Africa is a continent which is made up of 54 different countries and each country has its own flag.
- To know that the biggest country in Africa is Algeria and the smallest country is Gambia.
- To know that Kenya is a country in East Africa and that its capital is Nairobi

COMPUTING



Digital Writing:

Using a computer to create and format text, before comparing to writing non-digitally.

Programming Animations:

Designing and programming the movement of a character on screen to tell stories.

- To know that Naivasha is a market town in Kenya which is a popular tourist resort
- To know that wildlife tours are very popular in Naivasha, and tourists go on safari to see the 'Big Five' animals: rhino, lion, leopard, cape buffalo and elephant
- To know that farming is important to Naivasha, especially growing flowers (compare with Lincolnshire). Compare Nairobi and Naivasha with Thurlby and Bourne
- To know that there are different groups of people and that Maasai and Luo tribes live in Kenya. They are farmers. Compare with life of child in the UK.



- To know and locate seaside resorts around the UK on a map and know that Skegness is in Lincolnshire and that Hunstanton is in Norfolk
- To use digital maps and photographs to describe the features for each location
- To know key PHYSICAL features found by the sea: beach, cliff, coast
- To know key HUMAN features found by the coast: port, harbour, and shop
- To know that the coast has many different uses: leisure, fishing, tourism
- Conduct simple fieldwork at Hunstanton

PSHE



Relationships:

- Families
- Making Friends
- Greetings
- People Who Help Us
- Being My Own Best Friend
- Celebrating My Special Relationships

Changing Me

- Life Cycles

Changing Me

- My Changing Body
- Boys' and Girls' Bodies
- Learning and Growing
- Coping With Change

RE



Shabbat:

Key Question: Is Shabbat important to Jewish children?

Religion: Judaism

Prayer and worship

Key Question: Does visiting the Synagogue help Jewish children feel closer to God?

Religion: Judaism

ART



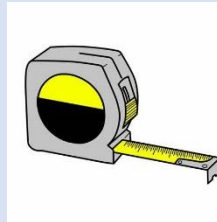
Sculpture:

- Individual sculpture based on an African animal.

Focus artists/artwork.

- Sophie Taeuber-Arp
- Pablo Picasso

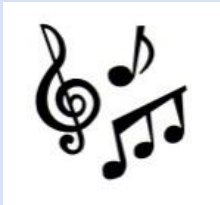
Design and Technology



Levers and Sliders:

- Design and make a moving scene, based on the sea
- Focus Designer: Maike Beiderstadt

MUSIC



Pitch and tempo

- *To understand that tempo can be used to represent mood or help tell a story.*
- *To understand that 'tuned' instruments play more than one pitch of notes.*
- *To know that following a leader when we perform helps everyone play together accurately.*
- **Vocal and body sounds**
 - *To know that dynamics can change*

MFL



- En mi pueblo (In my town)

Key vocabulary:

Una panadería- a bakery

Una piscina- a pool


Una escuela- a school

Una pista de patinaje- an ice rink

Un cine- a cinema

Un parque- a park

Una cafetería- a cafe

	<p><i>how someone listening feels about music.</i></p> <ul style="list-style-type: none"> <i>• To know that your voice can be used as a musical instrument.</i> <i>• To know that body percussion means making sounds with your body not your voice, e.g. clapping or slapping knees.</i> 		
<p>PE</p> 	<ul style="list-style-type: none"> • Ball skills • Team games • Tennis • Athletics 	<p>Please remember:</p> <ul style="list-style-type: none"> • Children must wear their PE kits on Monday and Thursday. • Please listen to your children read as much as possible and sign their learning journal so that we can change their books. <p>Please do not hesitate to contact me if you have any questions or need any support. Miss Baldwin</p>	